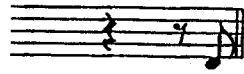


How In The World

from Secret Garden

Soprano Ballad
for Beef & Boards Dinner Theatre



For-

(Stgs/"Hp")
accel.

Poco più mosso

23 24 25
give me, can you for - give me and hold me in your heart And

(Vln) "Hp" mp (+ "Gtr") (Hn) (Vcl) (Vla) (Cls/HP)

26 27 28 29 (ten.)
find some new way to love me Now that we're a - part.

(Vln) "Hp" (Hn) (Vcl) (+Tbn) più espressivo (Fl) (ten.) rit. molto

Meno Mosso

30 31 32 33

How — could I know I would nev - er hold you? Nev - er a-gain in this world but Oh

(Fl)

"Gtr"
pp dolcissimo

Più appassionato

34 35 36 37

Sure as you breathe I am there in-side you. How ————— could I ev - er

(Fl)(H.-8vb)

(Vln)

"Gtr"

mf

40

know? ————— How ————— could I ev - er

"Gtr" (Stgs)

p

rit.

a tempo ma più mosso

know? *pp* *"Hp"* (Cl) (Vcl)

The image shows a musical score for a voice and instrumental ensemble. The top staff is a vocal line in treble clef with a key signature of two flats and a common time signature. It contains the lyrics "know?" and a fermata over a note. The middle section consists of three staves: a clarinet (Cl) in treble clef, a piano (Hp) in grand staff (treble and bass clefs), and a violin (Vcl) in bass clef. The piano part is marked *pp* and *"Hp"*. The clarinet and violin parts have various melodic lines and rests. The score is divided into measures by vertical bar lines.